

## Thank You!

Thank you for purchasing the Griffin Technology Amplifi 2.1 Sound System for your iPod.

Amplifi is a robust, full-spectrum sound system designed to fit easily on a desktop or a bookshelf, in any room of your house, office or studio. Inside Amplifi's acoustically-tuned enclosure are two 2.75" high/midrange speakers for clear highs and vocals, and a 5" woofer with a built-in bass reflex port for deep, expansive bass. Amplifi's sturdy wood construction delivers the difference — the warm, rich timbres that only wood-based speaker cabinets can impart.

Amplifi is designed to accommodate all current iPod models easily. Six different iPod adapter inserts are provided to fit any dock connector iPod. Amplifi will even charge the battery while you listen. A standard 1/8" (3.5mm) stereo auxiliary input audio jack accommodates other iPod models, MP3 players, audio CD players, tape players, portable radios — anything with a headphone or line out jack.

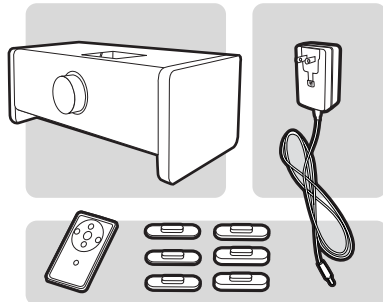
## What's Included

Amplifi 2.1 Sound System  
for your iPod

IR Remote

Six iPod Adapter Inserts

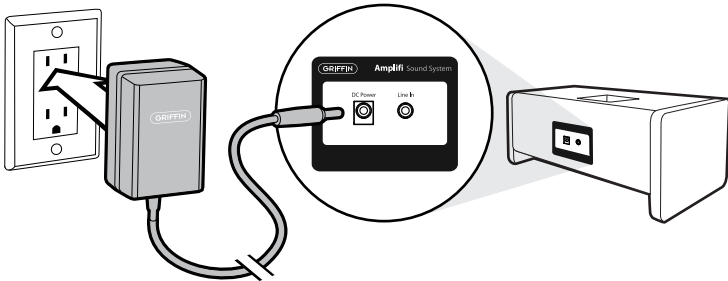
AC Power Cable



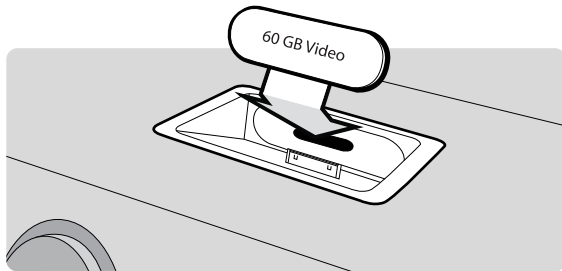
## Setting Up Amplifi

Start with Amplifi on a firm, level surface.

1. Connect the power supply to to the power port on Amplifi's rear panel, and plug the other end into a wall outlet.



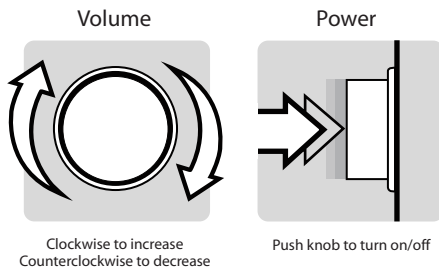
2. For iPod models with dock connector: Slide the appropriate iPod adapter insert for your iPod into the space provided in Amplifi's dock bay, then insert your iPod.



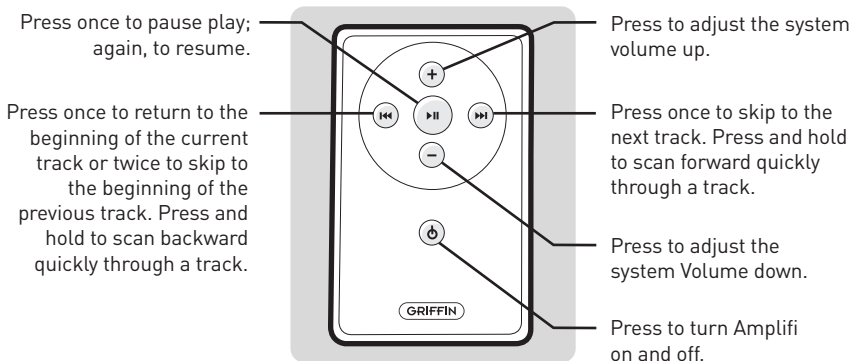
For earlier iPod models and devices with headphone or line-out jack: Use any cable with a plug appropriate for your device to connect to the 3.5mm (1/8") stereo in port located on Amplifi's rear panel. Set the volume on your device to about 3/4 of maximum, to maximize the signal and minimize distortion

3. The first time you turn Amplifi on, give the Power/Volume knob a half-turn counterclockwise to set the volume to a safe level (you can turn it up later to suit your taste), then press the Power/Volume Knob on Amplifi's front to turn the system on. The blue ring around the knob lights up, and you're ready to rock.

## Controlling Amplifi



## Using the Remote Control:



## Safety

- Read all instructions before using this product.
- Do not use this device near water or moisture.
- Clean only with a dry cloth. Unplug this product before cleaning.
- Do not install near any heat sources, such as radiators, heat registers, stoves or other apparatus that produces heat.
- Unplug this apparatus during lightning storms or when unused for long periods of time.
- This product is intended to be used only with the power supply provided.
- This product must be used indoors. It is neither designed nor tested for use outdoors, or in recreational vehicles or boats.
- Keep the remote control battery away from children. It may cause a fire or chemical burn if mishandled. Do not recharge, disassemble, heat above 100°C (212°F), or incinerate. Dispose of used batteries promptly and properly, observing all local regulations. Replace only with a battery of the correct type and model number.
- Refer all servicing to qualified service personnel. Do not attempt to service this product yourself.



**Remember: Listening to music at loud levels can cause permanent hearing loss. Please listen responsibly! We want you to enjoy Amplifi's great sound for many happy years to come.**



To reduce the risk of electric shock, do not expose the product to rain or moisture.



No open flame sources, such as lighted candles, should be placed on the device.

Complete Declaration of Conformity documents can be found at [www.griffintechology.com](http://www.griffintechology.com).

## Tech Specs

Frequency Response: 50 Hz to 16 kHz

Power: 120-220 Volts AC

Remote Operating Range: 10 meters line of sight

For further information, visit Griffin Technical Support online:  
<http://www.griffintechology.com/support/>



Amplifi is a trademark of Griffin Technology, Inc. • iPod is a trademark of Apple Computer, Inc., registered in the U.S. and other countries.

© 2007 Griffin Technology • [www.griffintechology.com](http://www.griffintechology.com)

Made in China • Designed in Tennessee