

TuneFlex[®] AUX
QUICK START GUIDE

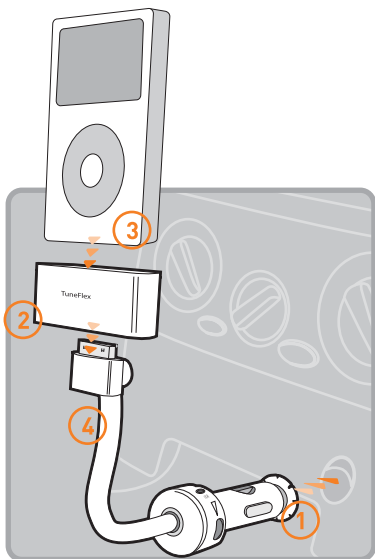


TuneFlex[®] AUX for iPod[®]

Thank you for purchasing Griffin Technology's TuneFlex AUX. We think you'll find that TuneFlex provides the convenience and functionality of a custom mounting solution for your iPod, without the expense and hassle of a custom installation.

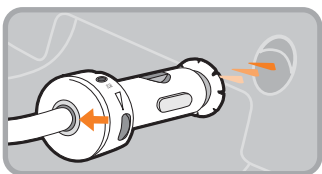
Connect

1. Plug TuneFlex into your car's cigarette lighter or accessory port.
2. Select the adapter appropriate for your iPod model and slide it onto TuneFlex.
3. Slide your iPod into the TuneFlex adapter, seating it firmly onto the built-in dock connector.
4. Adjust TuneFlex's flexible neck, and rotate the cradle to a convenient position.



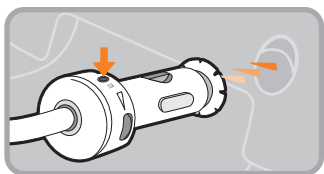
Power & Charge

TuneFlex AUX plugs into your car's cigarette lighter to charge and power your iPod as you use it. The light ring on the plug shows charging status at a glance: red when connected, amber when charging, and green when charging is finished.



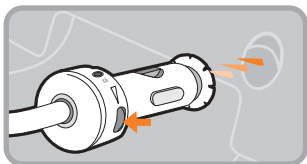
Play

We've included an audio cable that allows you to take advantage of your car stereo's auxiliary audio input jack. This input jack may be located on the dashboard in plain view, or under the dashboard, or even inside the glove compartment. Check your car's owner's manual for details. Connect the audio cable to the headphone jack of your iPod, or to the built-in audio jack on the base of your TuneFlex.



quick start guide

Near TuneFlex's audio jack at the base of the stem is a Gain Adjustment wheel. If you connect your audio cable through TuneFlex's audio jack, you can use this wheel as a volume control, to match the strength of your audio signal for best results with your car stereo.



We recommend first trying a low setting. If the resulting signal is too weak or too low in volume, first turn down your stereo's volume levels, then rotate the wheel toward Hi. Choose the setting that results in the strongest, cleanest sound with your system.

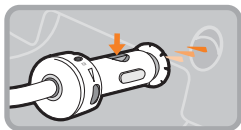
Happy motoring!

Visit Griffin Support online at
<http://www.griffintechnology.com/support/>

Troubleshooting

Problems? No problem.
Check these tips for a quick fix:

- TuneFlex AUX
 1. Fully plugged in to cigarette lighter?
 2. Audio cable fully attached to TuneFlex AUX line-out port?
 3. Gain Adjustment turned up?
- iPod
 1. Hold switch on?
 2. Play button depressed? Song not paused?
 3. iPod battery completely drained? If so, your iPod must recharge for a few short minutes before TuneFlex AUX senses your iPod.
 4. iPod firmware up to date?
- Fuses
 1. Car's cigarette lighter fuse good? (Consult your car's owner's manual for fuse locations and specifications.)
 2. TuneFlex AUX's fuse blown? Check the replaceable fuse located near the front of the unit. (See illustration). An automotive blade-type mini fuse (sometimes called an ATM fuse) rated at 2 Amps can be obtained at most auto supply or hardware stores. For best results, take the blown fuse with you to ensure a match.



Problem's not solved?

Call Griffin Technology's Customer Support at 800-208-5996 Monday—Thursday 9 am to 6 pm and Friday, 9 am to 5 pm Central time.

Your call will be answered by real human beings who actually know and use Griffin products.

Technical Specifications

- ▶ Input Voltage Range: 12 Volts DC
- ▶ Maximum Current: 2 Amp
- ▶ Output Voltage: 5.2 Volts AC at 1 Amp
- ▶ Fuse Type: 2 Amp blade-type automotive fuse

Adapters included for:

- ▶ iPod classic 80/160GB
- ▶ iPod touch
- ▶ iPod nano 3rd generation (video)
- ▶ iPod nano 2nd generation
- ▶ iPod with video (30/80GB)



GRIFFIN

Apple is not responsible for the operation of this device or its compliance with safety and regulatory standards. • "Made for iPod" means that an electronic accessory has been designed to connect specifically to iPod and has been certified by the developer to meet Apple performance standards.

1 YEAR WARRANTY

Warranty details at www.griffintechnology.com/support/

We stand behind every product with the industry's best customer service, backed by a simple, fair warranty. Using this product signifies your acceptance of the terms of the warranty, so please read our warranty details at www.griffintechnology.com/support/ before using your Griffin product.

© 2007 Griffin Technology • www.griffintechnology.com • TuneFlex is a registered trademark of Griffin Technology Inc. • iPod is a trademark of Apple Inc., registered in the U.S. and other countries. Patents pending • Made in China • Invented in Tennessee