

Simplifi™

GRIFFIN

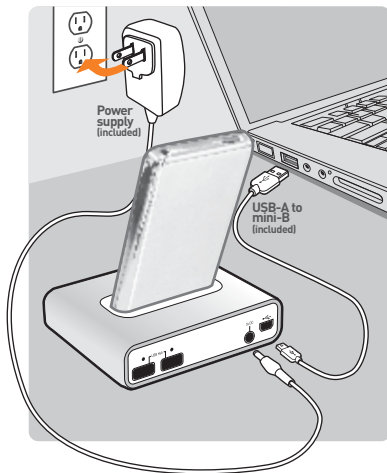
Simplifi™

Simplifi is a 3-in-1 way to reduce clutter on your desk:

1. A charge/sync dock for iPod® and iPhone™
2. A media card reader
3. A powered USB hub

Connect Simplifi to your computer.

Simplifi gets its power from your computer's USB port. Low-power devices like mice and keyboards do not need additional power. Some USB devices, however, do require more power than the USB port can provide. For this purpose, we have included an AC power adapter.



Choose the dock insert for your iPod or iPhone:

- ▶ For iPhone 3G, # 15.
- ▶ For iPhone, # 12.
- ▶ For iPod touch (2nd generation), # 16.
- ▶ For iPod touch (1st generation), # 14.
- ▶ For iPod nano (4th generation), # 17.
- ▶ For iPod nano (3rd generation), # 13.
- ▶ For iPod classic 80 GB, # 9.
- ▶ For iPod with video (5th generation) 30 GB, # 9.
- ▶ For iPod shuffle, use USB ports on Simplifi's rear panel.

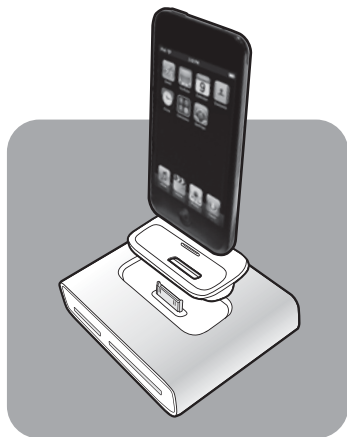
For iPod models not listed here, use the dock adapter that came with your iPod.

Technical Specifications

Normal rated voltage: DC 5V

Electric current: 1.2A (power adapter)

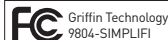
Operating temperature: 0°C–60°C



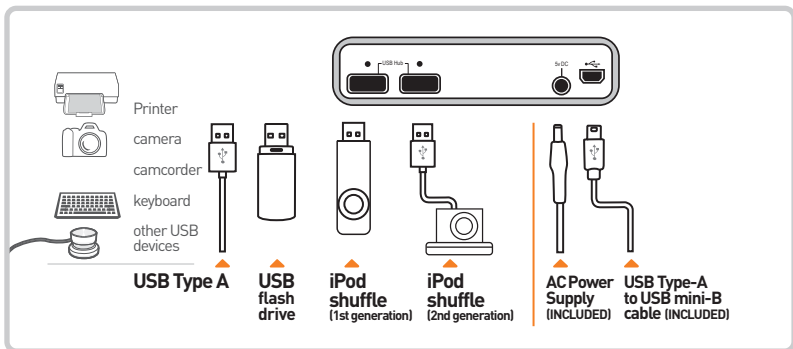
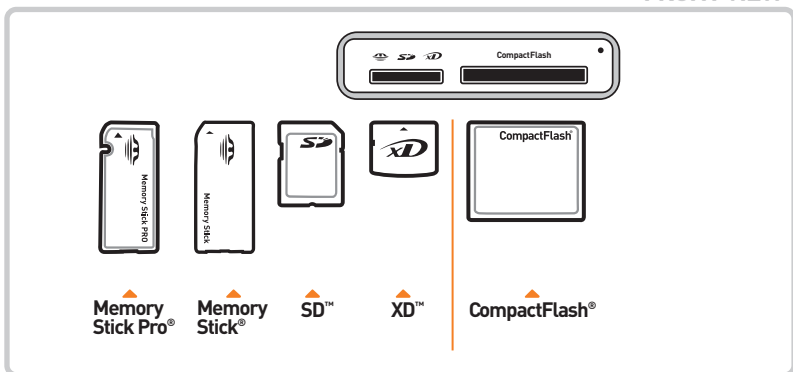
"Made for iPod" means that an electronic accessory has been designed to connect specifically to iPod and has been certified by the developer to meet Apple performance standards.

"Works with iPhone" means that an electronic accessory has been designed to connect specifically to iPhone and has been certified by the developer to meet Apple performance standards.

Apple is not responsible for the operation of this device or its compliance with safety and regulatory standards.



This device complies with Part 15 of the FCC Rules and RSS-210 of the Industry Canada Rules. Operation is subject to the following two conditions: (1) this device may not cause harmful interference, and (2) this device must accept any interference received, including that may cause undesired operation. The manufacturer is not responsible for any radio or tv interference caused by unauthorized modifications to this equipment. Such modifications could void the user's authority to operate the equipment.



Questions?

www.griffintechnology.com/support/
or call Griffin's Customer Support at 800-208-5996.

Monday - Thursday 9 am - 6 pm and Friday 9am - 5pm Central time.

Your call will be answered by real human beings who actually know and use Griffin products.

GRIFFIN

1 YEAR WARRANTY

Warranty details at www.griffintechnology.com/support/



We stand behind every product with the industry's best customer service, backed by a simple, fair warranty. Using this product signifies your acceptance of the terms of the warranty, so please read our warranty details at www.griffintechnology.com/support/ before using your Griffin product.

© 2009 Griffin Technology, Inc. • www.griffintechnology.com • Simplifi is a trademark of Griffin Technology, Inc. • iPod is a trademark of Apple Inc., registered in the U.S. and other countries. • iPhone is a trademark of Apple Inc. • Memory Stick and Memory Stick Pro are registered trademarks of Sony Corporation. • SD is a trademark of SanDisk Corporation. xD and xD-Picture Card are trademarks of Fujifilm, Olympus and Toshiba. • CF and CompactFlash are registered trademarks of SanDisk Corporation. Patents pending. • Made in China. Designed in Tennessee. Please recycle this package. Thanks!