

AirDock^{for} iPod

Thank you for purchasing Griffin AirDock. AirDock is a combination iPod dock and remote control receiver that, along with your iPod, will soon become an indispensable part of your home entertainment system.

Sync: Use AirDock with your personal computer

1. Connect the included USB mini cable (L) to AirDock's USB mini port (B). Plug the other end of the USB cable into an available USB port on your computer.
2. Slip your iPod into AirDock's cradle. Your iPod will sync with your computer as usual.

Play: Use AirDock with your home entertainment system

1. In this package, we've included our own high-quality HomeConnect™ AV cable (K) for video and audio connection to your home entertainment system. Plug HomeConnect's 1/8" (3.5mm) plug into AirDock's AV out port (D). Plug the other end of HomeConnect into the appropriate RCA plugs in your entertainment system.
2. Also in this package, we've included our best AC power supply: Griffin's PowerBlock™ AC Adapter. Plug the USB mini end of the supplied USB cable into AirDock's mini USB port, and the other end into PowerBlock's USB port, then plug PowerBlock into any AC outlet. PowerBlock will provide safe power levels to your iPod from any 100V to 240V AC outlet.
3. Slip your iPod into AirDock and use the included remote to control your music.

Control: About the Remote

AirDock comes with its own full-function RF remote control that can transmit signals from up to 60 feet away and through walls. Use it to control Play/Pause (E), Next/Fast Forward (H), Previous/Rewind (F), and volume (G, I) as you would any other remote.

If you have the good fortune to live in a two-AirDock household, AirDock's Pairing feature may be useful. Through Pairing, you can "lock" your AirDock so that it will respond to only one AirDock Remote, ignoring the commands of other remotes in the same household.

To Pair AirDock with its remote, press the "Pairing" button (C) on AirDock's rear panel, and then press any button on the remote. AirDock will now be paired with this remote and will not accept commands from other remotes. To "unpair," press the Pairing button and don't press any buttons on the remote for about 15 seconds.

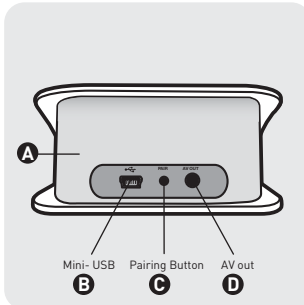
The AirDock Remote also features a Hold switch (J) on its right side, which works like the Hold switch on your iPod. Slide this switch to the Hold position to prevent the unwanted effects of accidental remote button-presses. Slide the Hold switch back to its original position to resume normal operation of the Remote.

Other Features:

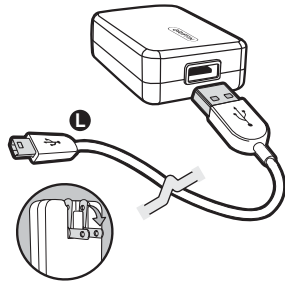
Your AirDock features video pass-through so you can control a video while it is playing. The Play, Pause, Fast Forward, and Rewind functions on the Remote work as you would expect your DVD player to work.

And, of course, you can use AirDock simply as a standard iPod dock, to sync your iPod with files on your computer.

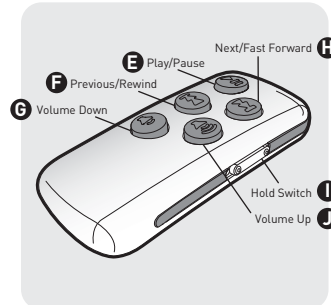
AirDock Rear Panel



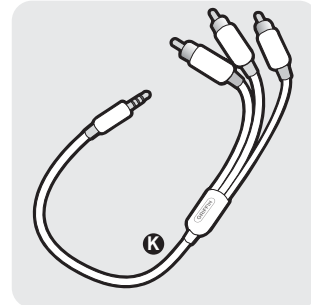
PowerBlock



Remote Control



HomeConnect Cable



Remote Specifications:

- Operating Range: Up to 60 feet
- Transmission Method: Radio Frequency
- Frequency: 433MHz
- Remote Battery: CR2032 3V
- Remote Dimensions: 2.75" x 1.25" x 0.5" (69.8cm x 31.7mm x 12.7mm)

1 YEAR WARRANTY

Griffin stands behind every product, with the industry's best customer service, backed by a simple, fair warranty. Please read our warranty details at www.griffintechology.com/support/ before using your Griffin product.



This device complies with Part 15 of the FCC Rules. Operation is subject to the following two conditions:
(1) this device may not cause harmful interference, and
(2) this device must accept any interference received, including interference that may cause undesired operation.



© 2007 Griffin Technology • www.griffintechology.com
AirDock is a trademark of Griffin Technology, Inc. • iPod is a trademark of Apple, Inc., registered in the U.S. and other countries. • Patent Pending • Made in China
Designed in Tennessee



GRIFFIN

AirDock for iPod